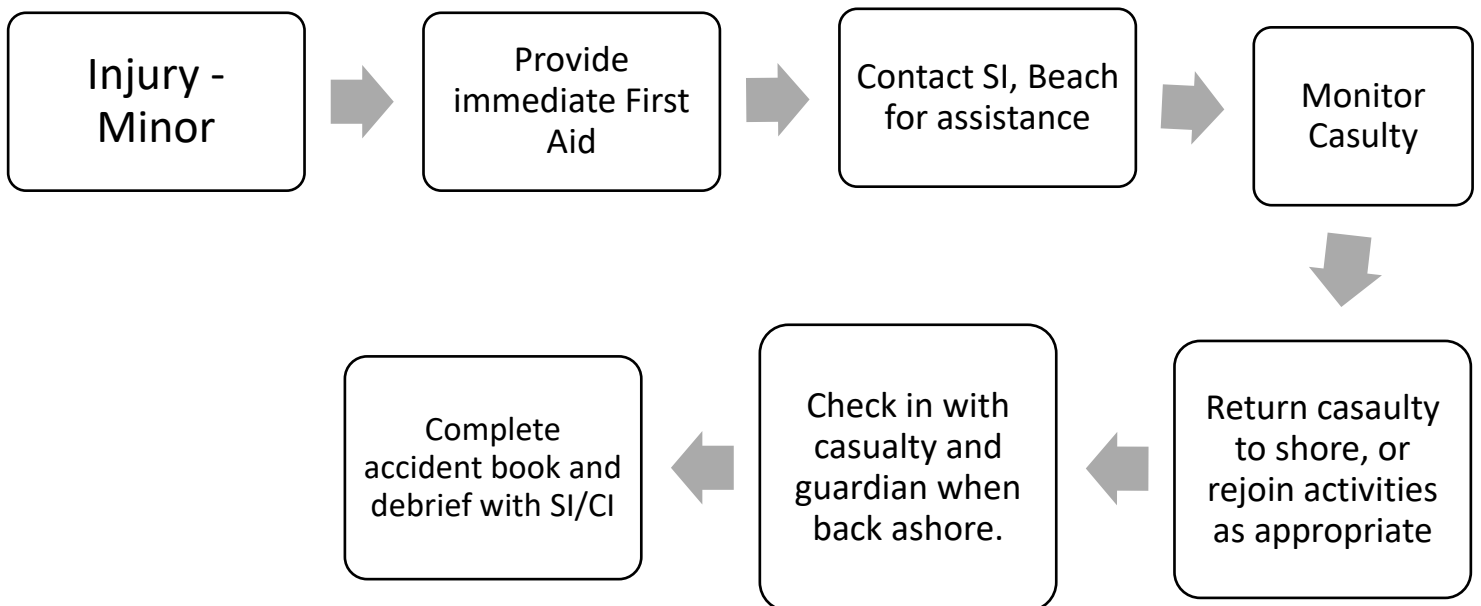
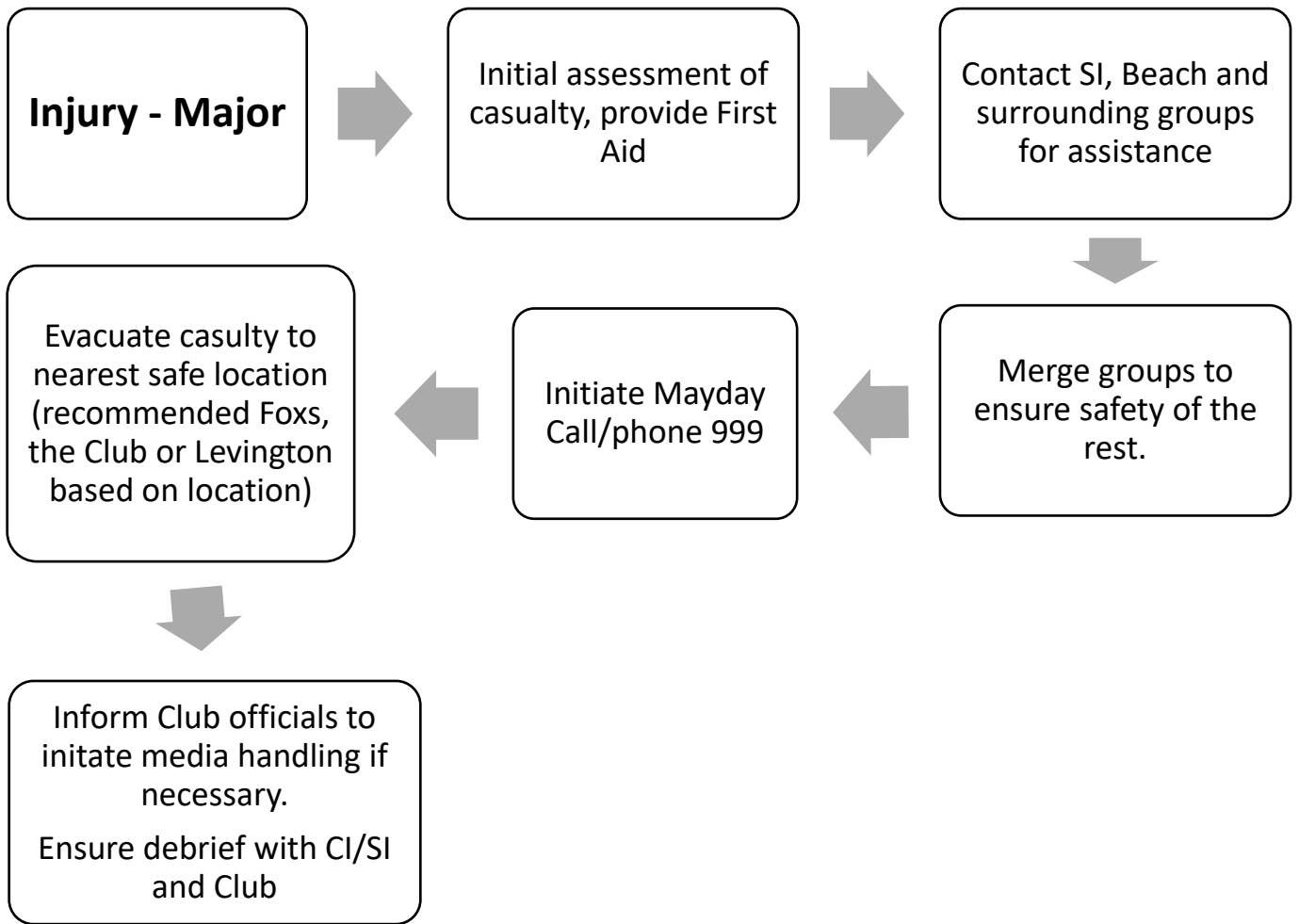
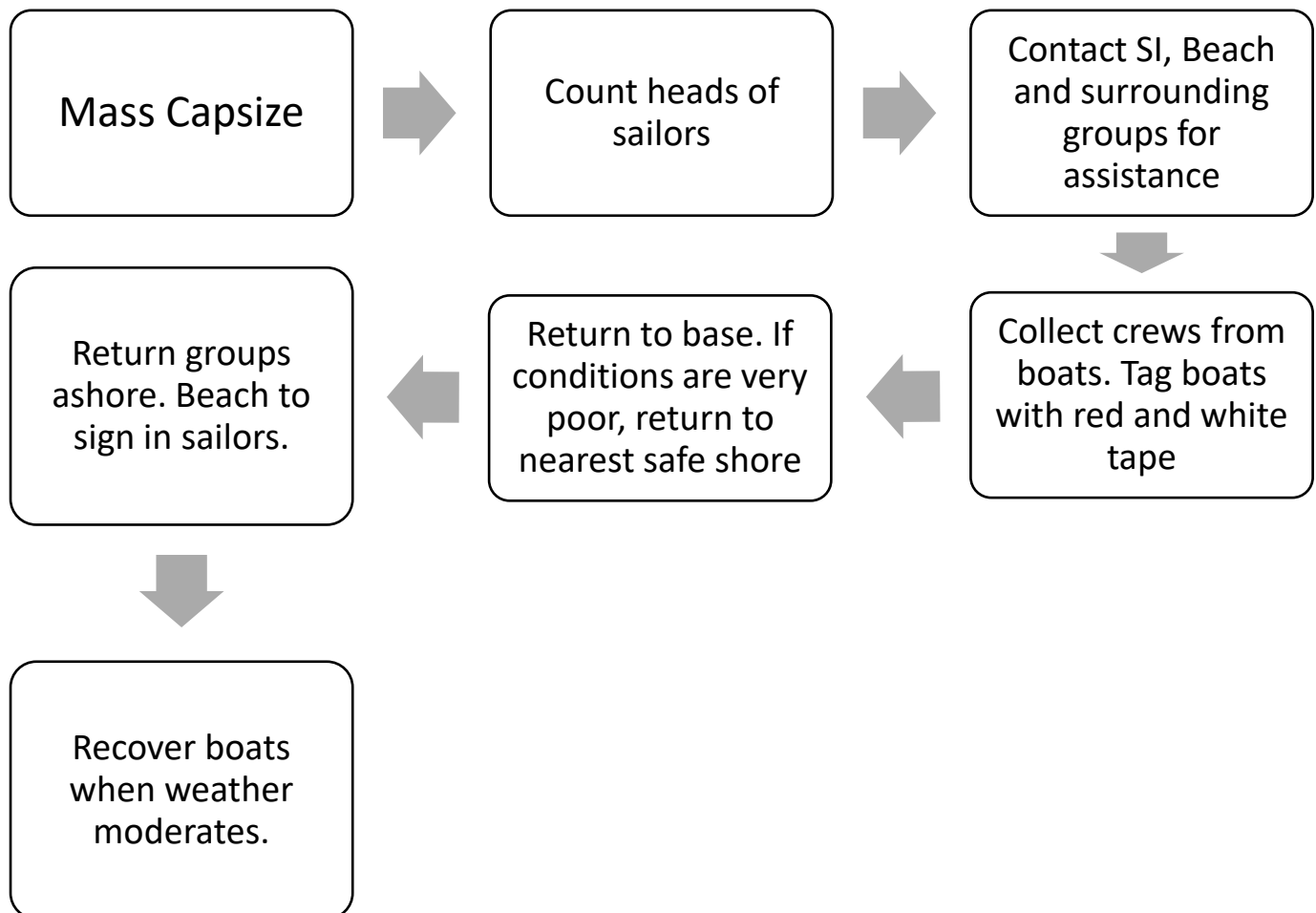
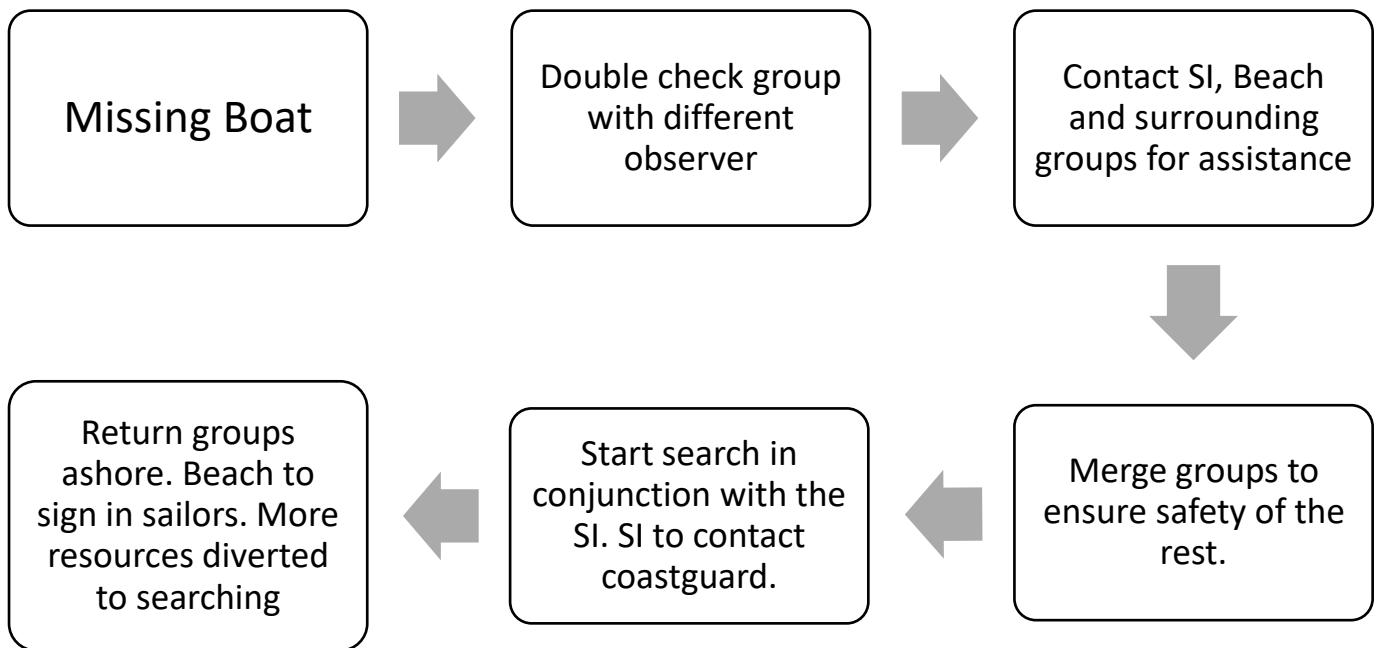


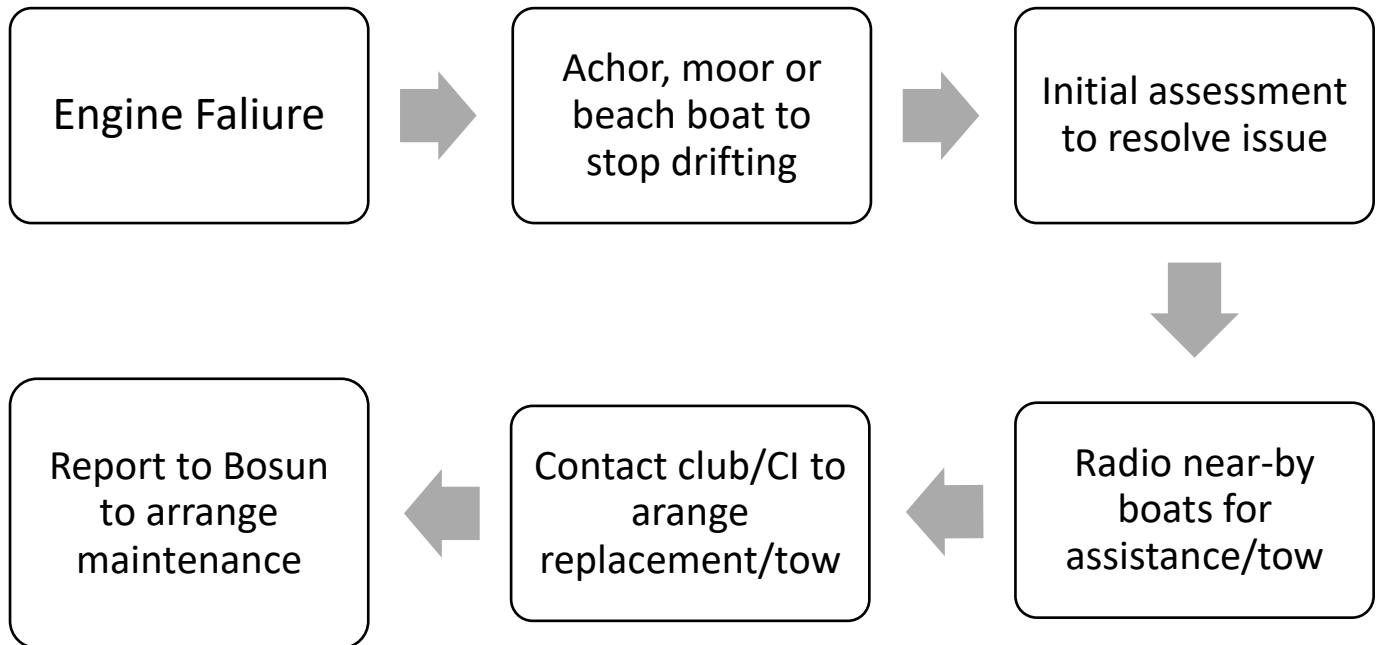
Emergency Action Plan - General



Emergency Action Plan - Sailing



Emergency Action Plan - Power



Emergency Action Plan – Additional Info

Extraction of a casualty is at the discretion of the responding instructor/SI. If a casualty needs to be transferred to hospital, the meeting point is dependent on location

Foxs Marina (Ch 80)	Club	Suffolk Yacht Hbr (Ch 80)
The Strand	Marina Road	Levington
Ipswich	Woolverstone	Ipswich
IP2 8SA	IP9 1AT	IP10 OLN
lofts.recap.dynasties	ranch.heartened.binds	farmed.ironclad.defers

Mayday – Channel 16

“MAYDAY, MAYDAY, MAYDAY”

“THIS IS...” (say the name of your vessel 3 times. Say your MMSI number and call sign)

“MAYDAY, THIS IS...” (say name of vessel)

“MY POSITION IS...” (latitude and longitude, true bearing and distance from a known point, or general direction)

“I AM...” (say nature of distress eg SINKING, ON FIRE)

“I REQUIRE IMMEDIATE ASSISTANCE”

“I HAVE...” (say number of persons on board PLUS any other useful information – such as sinking, flares fired, abandoning to liferaft)

“OVER”

Flares

All boats should have a set of flares on board (Dory's = under the seat, RIBS = Forward locker, under seat or A-Frame. These should be a last resort to signal distress as a flare only burns for about 60 seconds

Read instructions carefully on side of flare, stand downwind in the boat, holding the flare at arm's length over the side of the boat.